

# FAST INSURANCE COMPONENTS

## business processes delivered in a Services Oriented Architecture

As an **alternative to large packaged vendor systems**, FAST provides the insurance industry's first complete suite of business process driven software components that deliver targeted, as well as full end-to-end solutions, for Policy Administration, Distribution Management, and Insurance Portals. FAST Insurance Components allow carriers to achieve legacy modernization without the cost and risk of "big bang" projects, and offer a fully SOA-compliant alternative to conventional vendor systems.

FAST has over 40 pre-built components designed and built specifically for insurers (life/health and P&C) and distributors. FAST takes configuration to the next level, allowing you to configure changes to data, rules, and business processes while staying fully aligned with future upgrades of those same components. We also provide a sophisticated configuration governance model that streamlines the control and maintenance of configuration. The components are offered individually or as packages for:

- Policy Administration – group and individual processing for a wide range of products
- Distribution Management – carrier and broker functionality for producer management and commission processing
- Insurance Portal – shared, common user experience for home office users, producers, and customers
- Case Management – full offerings for new business and underwriting, claims, and service support
- Many other combinations exist to meet customer-specific business process needs

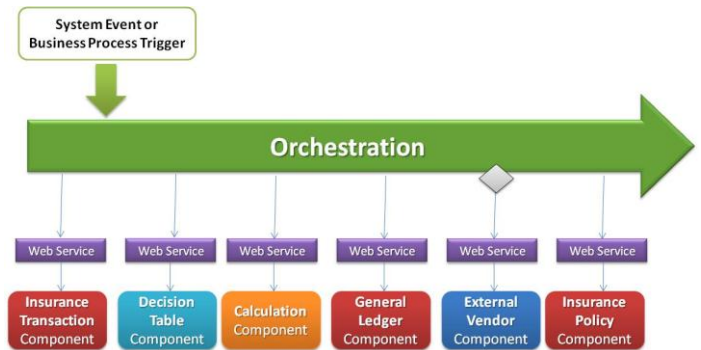
Traditional vendor products force insurers to adjust their business processes to fit the constraints of their solution, or to incur the large cost of package "modifications" that typically make future software upgrades cost-prohibitive. At FAST, we allow you to use only the specific software components you need while giving you the flexibility to adjust those components the way you need to.



## COMPONENT TECHNOLOGY

**FAST Insurance Components are comprised of replaceable technical components woven together through BPM**

- Pre-configured orchestrations - supports MS-BizTalk, IBM Process Server, and standalone web services (Java or C#)
- Core web services and component code (Java or C#)
- Pre-configured Calculation Services
- Pre-configured Business Rules / Decision Services
- EXT-JS with AJAX front end
- Flexible high performance data model
- Pre-configured Output
- Pre-configured Validation Services
- Flexible insurance product structures link components together



*FAST has a modern approach now possible with true plug and play that is similar to an app store- "what you like" + "how you like it" + "when you like it" - Source: SMA Perspective: A New Day for Life & Annuities Solutions Achieving the SOA Vision 2011*

➤ For more company news and information, please visit our website at [www.fasttechnology.com](http://www.fasttechnology.com)

**FAST**  
Flexible Architecture. Simplified Technology.

## FULL LINE OF INSURANCE SUPPORT

### Products:

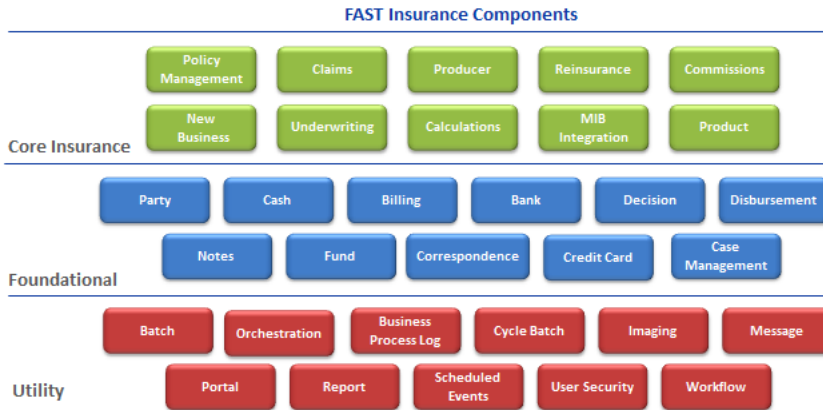
- Term Life
- Whole Life
- Universal Life
- Deferred and Immediate Annuities
- Long-Term Care and Critical Illness
- Fixed, Variable, Equity Indexed
- Commercial and Personal Property and Casualty Lines

### Business processes:

- New Business / Case Management
- Underwriting
- Policy Administration
- Cash Management
- Claims
- License and Commissions
- Producer / Consumer Self-Service

### Features:

- Individual & Group processing
- International
- Real-time financial processing
- Full undo/rewind of user actions
- Full audit history of all changes
- Role and user security to field/button
- Business intelligence and analytics



**Core Insurance Components** deliver robust, complex insurance processing capabilities, and come pre-configured with data structures and relations, business rules and validations, and business process flows that access other components or snap into your current environment.

**Foundational Components** provide fundamental business functions that are frequently used in Core Insurance applications.

**Utility Components** provide useful, reusable features that help Insurance Components perform their business and IT functions.

## KEEP USING YOUR SOFTWARE THAT ALREADY WORKS FINE

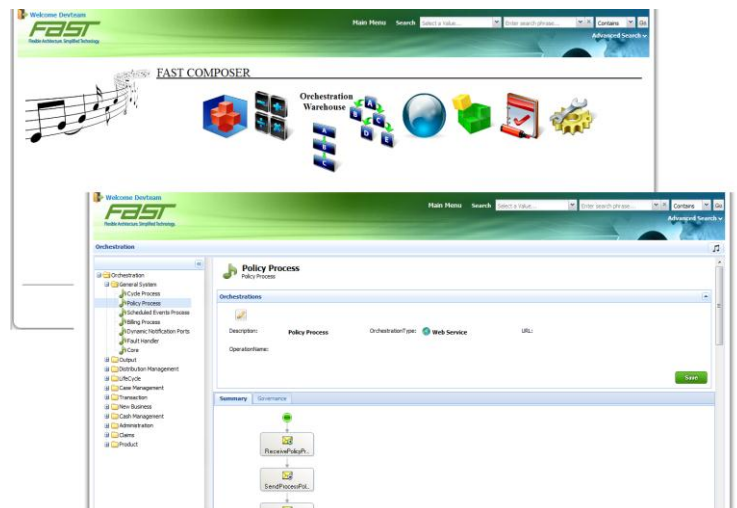
FAST components can be used in concert with your existing legacy systems to provide critical new business capability without the cost and risk of a large system replacement. For example, you may have a large block of older policies running on a legacy administration system that is poorly documented. The system is working fine; however it will be cost-prohibitive to support a new rider, or to introduce house-holding for billing and correspondence, or to enhance how you track and report on reinsurance. FAST Insurance Components can supply the missing functionality while working with your existing system, essentially acting as an add-on capability that is seamless to your business users. Technology features built into FAST 8x and our Insurance Components enable this interaction to revitalize your legacy platform as well as start a process that may eventually lead to full legacy replacement over time.

## ROBUST COMPONENT CONFIGURATION

### FAST Composer takes agility, flexibility, and configurability to the next level

Composer provides a centralized configuration interface for managing application structures & models, business rules, calculations, business events, business processes, automated testing and more. FAST Composer's configurability will change the way you see technology:

- Rapid development, integration, and testing
- Creates a highly efficient maintenance environment
- Easy to use configuration interface helps to quickly learn, scale organization, and empowers you to be free from being tied to any specific vendor
- Promotes a strong SOA governance model
- Even more powerful when using an Agile methodology by allowing the business partners to participate in development



➤ For more company news and information, please visit our website at [www.fasttechnology.com](http://www.fasttechnology.com)

**FAST**  
Flexible Architecture. Simplified Technology.