

FAST LIFE INSURANCE COMPONENTS

the next generation of technology for life insurers

Through our consulting and our FAST 8x software framework, FAST offers the next generation of technology for life insurers. Given the complexity and diversity of products, distribution, and existing technology, most life systems require extensive, costly customization to meet your business needs – and they offer a significant amount of functionality that you don't need.

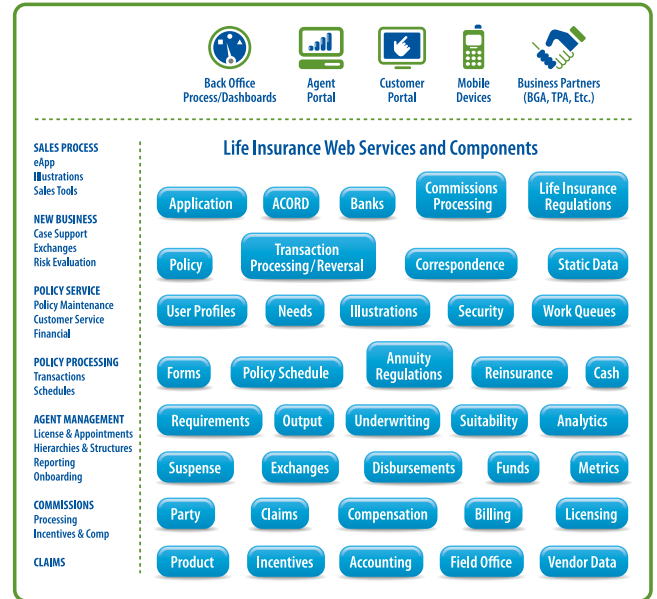
FAST solves these problems and offers the first suite of components and web services that allow you to balance the need to acquire a "package" system with the desire to build your own. FAST allows you to:

- Reduce or even eliminate redundancy of functionality across your enterprise
- Leverage your existing investments by easily integrating the components
- Add the functionality you need without implementing functionality you don't need
- Easily extend and configure components using an event driven architecture
- Provide a state-of-the-art user experience to your business using Web 2.0 technology
- Stay current with technology and innovate without major "big bang" projects

TRUE SOA AND COMPONENT ARCHITECTURE FOR LIFE INSURANCE

The mission of most modern life insurance systems is to help the carrier roll-out more innovative products quickly, improve their operational effectiveness, reduce their IT costs, and make the organization easier to do business with. However that mission is often not realized because of the technical challenges associated with conventional "large" systems.

With FAST, smaller footprint components are broken down to a relatively granular level of functionality. Business processes and traditional applications can be assembled by combining components.



ADVANTAGES OF FAST LIFE INSURANCE COMPONENTS

Challenge	FAST Advantage
Conventional systems claim to be SOA or component-based, but they're designed to be "the center of your universe"	<ul style="list-style-type: none"> • Our components and services are designed to operate on a standalone basis, but they can also be combined with other components for a larger business process • Advanced architecture techniques are used to balance performance and reusability • Eliminate redundancy and the need for synchronization across business functions
You don't want to be tied to proprietary rules engines, BPM/workflow tools or calc engines	<ul style="list-style-type: none"> • Pre-built interfaces, rules and calculations with Excel, InRules, and any JSR94 rules engine • Designed to also leverage your existing calculation engines and legacy admin systems • Pre-configured / integrated orchestrations for business process management using BPEL standard tools
Lowering your cost and simplifying implementation and maintenance	<ul style="list-style-type: none"> • Isolated changes and event-driven, so you avoid sorting through millions of lines to detect functional behavior • Software is built to anticipate future needs (i.e. complete set of APIs and underlying functionality generated beyond the specific needs of original features) • Shorter project cycles rather than "big bang" projects • Built-in automated testing capabilities • Consistent and simplified technical design to allow development to be done by "non-experts", which enables lower cost resources and variable staffing models • Data migration capabilities are inherent to the design of the components – allowing for legacy conversion
Providing a great, efficient User experience to a diverse set of users	<ul style="list-style-type: none"> • Leverages Web 2.0 technology and concepts • Human centered design model provides less clicks and page changes, organized information, and simplified processes

► For more company news and information, please visit our website at www.fasttechnology.com

